

Existing Land Use

Town of Presque Isle - Vilas County, Wisconsin

MAP 9-1

- EXISTING LAND USE**
- Single-Family
 - Residential w/Business
 - Two-Family
 - Multi-Family
 - Highway Commercial
 - Community Commercial

- Active and Closed Landfill Sites / Transfer Stations / Recycling
- Private Campground
- Resort
- Industrial
- Active and Abandoned Cravel Pits
- Public Schools

- Cemetery
- Airfields
- Private Schools
- Private Utilities
- Government Facilities
- Parks & Recreation
- Youth / Adult Recreation Areas

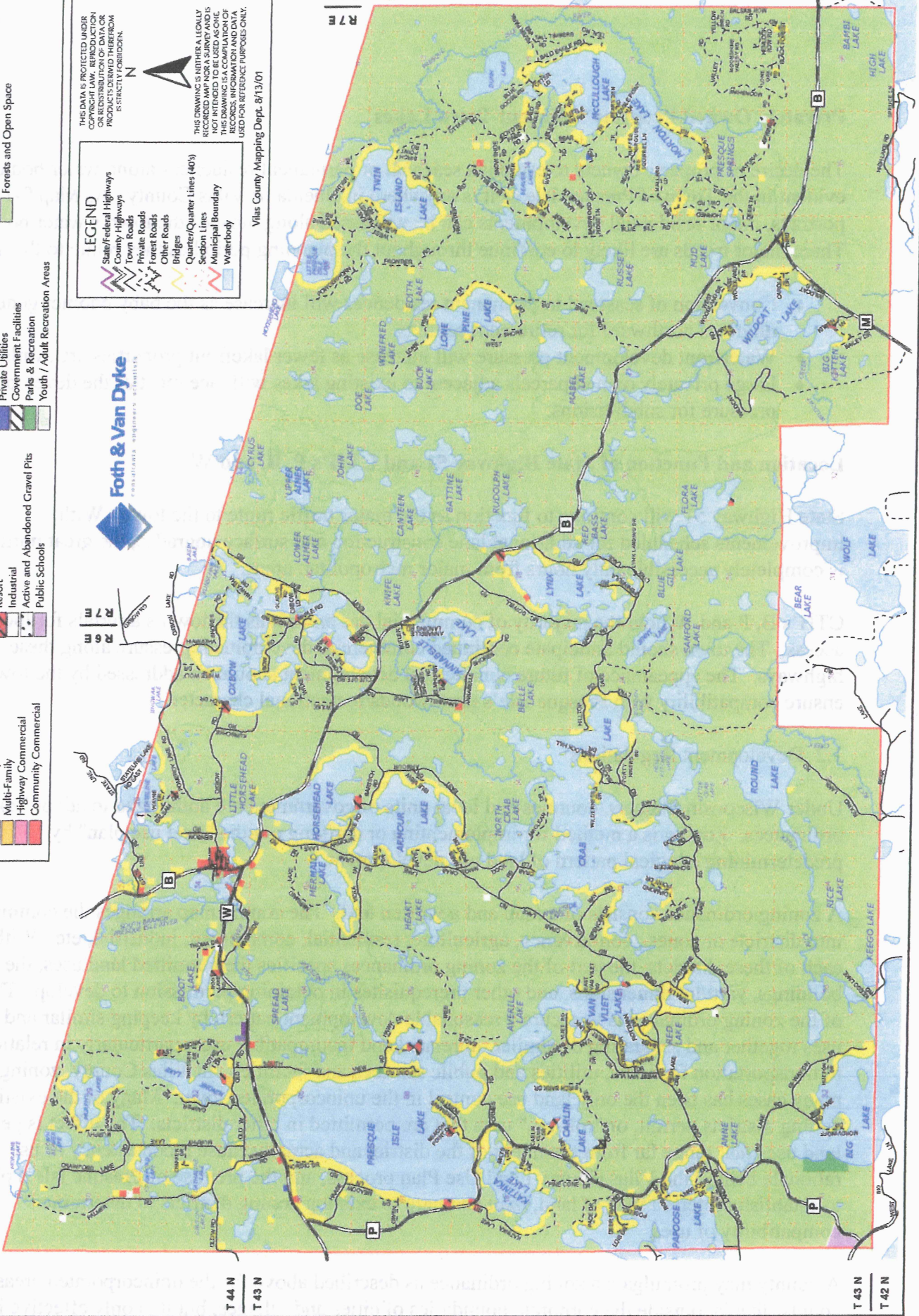
- Active Farmland (tilled, pasture, etc.)
- Farmsteads
- Orchards / Nurseries / Christmas Trees
- Forests and Open Space

- LEGEND**
- State/Federal Highways
 - County Highways
 - Town Roads
 - Private Roads
 - Forest Roads
 - Other Roads
 - Bridges
 - Quarter/Quarter Lines (40')
 - Section Lines
 - Municipal Boundary
 - Waterbody

THIS DATA IS PROTECTED UNDER SECTION 19.35 AND ANY REPRODUCTION OR DISTRIBUTION OF DATA OR PRODUCTS DERIVED THEREFROM IS STRICTLY FORBIDDEN.

THIS DRAWING IS NEITHER A LEGALLY BINDING DOCUMENT NOR A SURVEY AND IS NOT TO BE USED FOR ANY PURPOSES OF THIS DRAWING IS A COMPLIANCE OF RECORDS, INFORMATION AND DATA USED FOR REFERENCE PURPOSES ONLY.

Vilas County Mapping Dept. 8/13/01



R 5 E
R 6 E

T 43 N
T 44 N

T 42 N
T 43 N

R 6 M
R 7 M